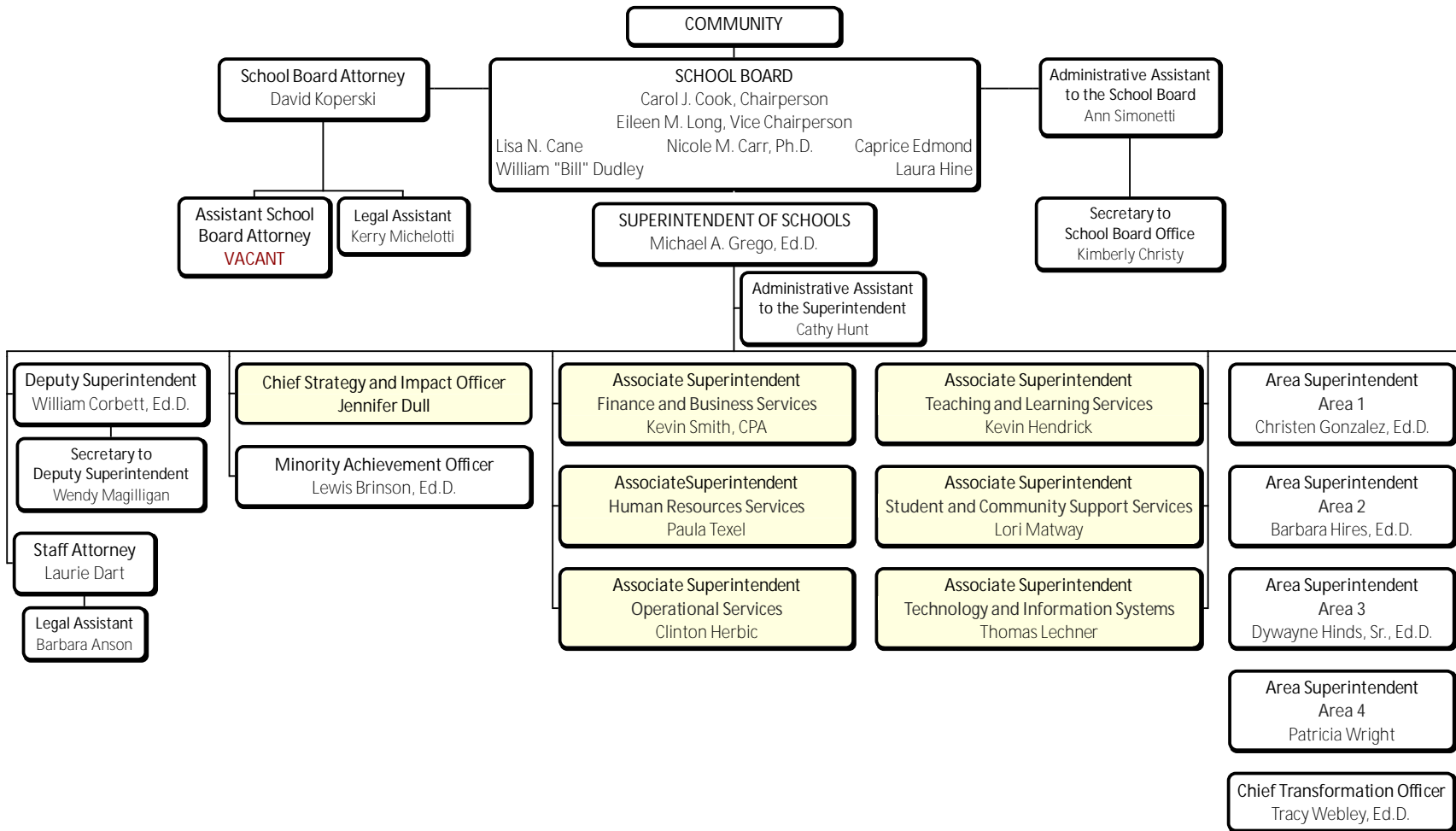
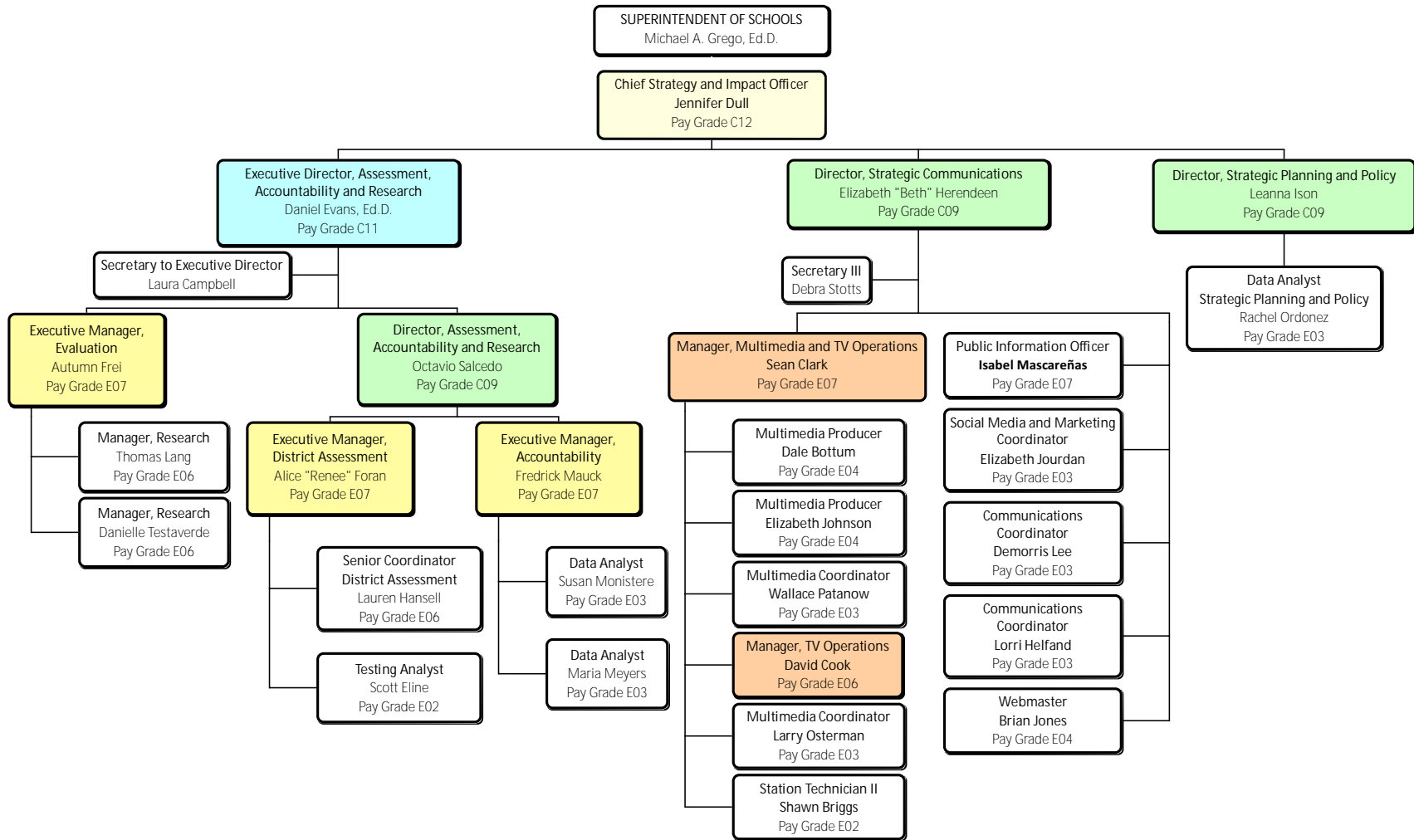




# School Board of Pinellas County, 2020/2021

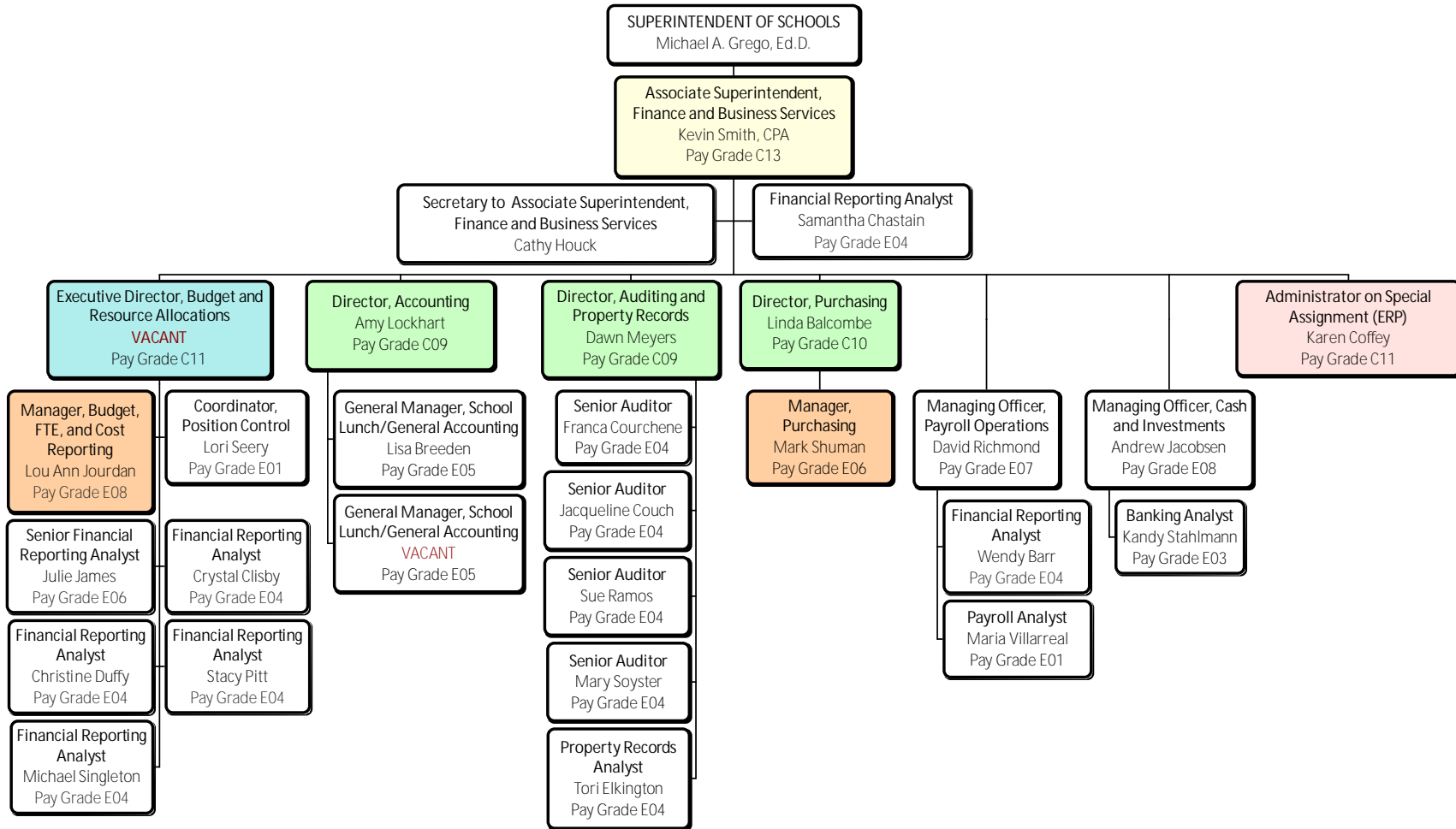


# Strategy and Impact



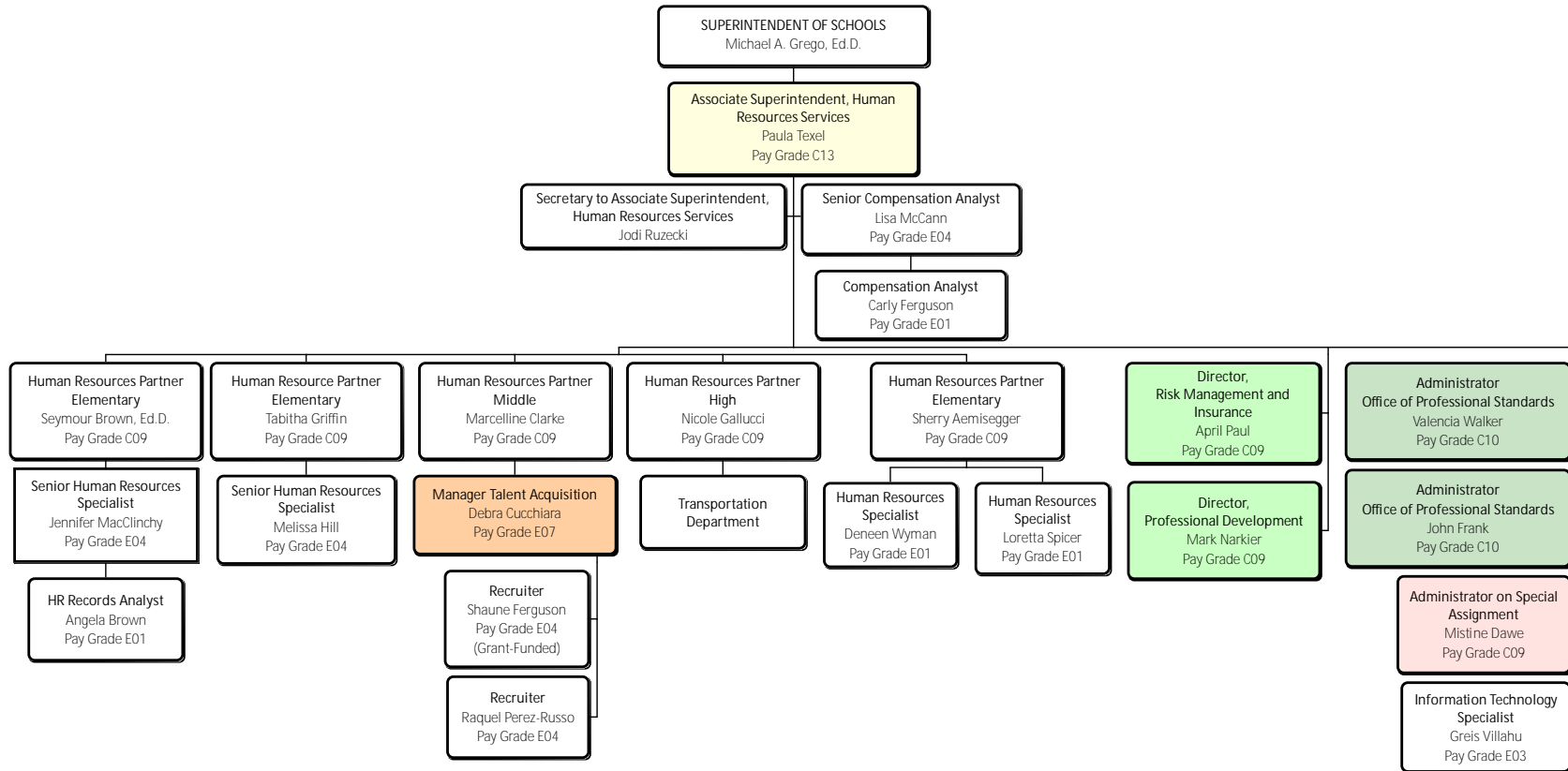


# Finance and Business Services



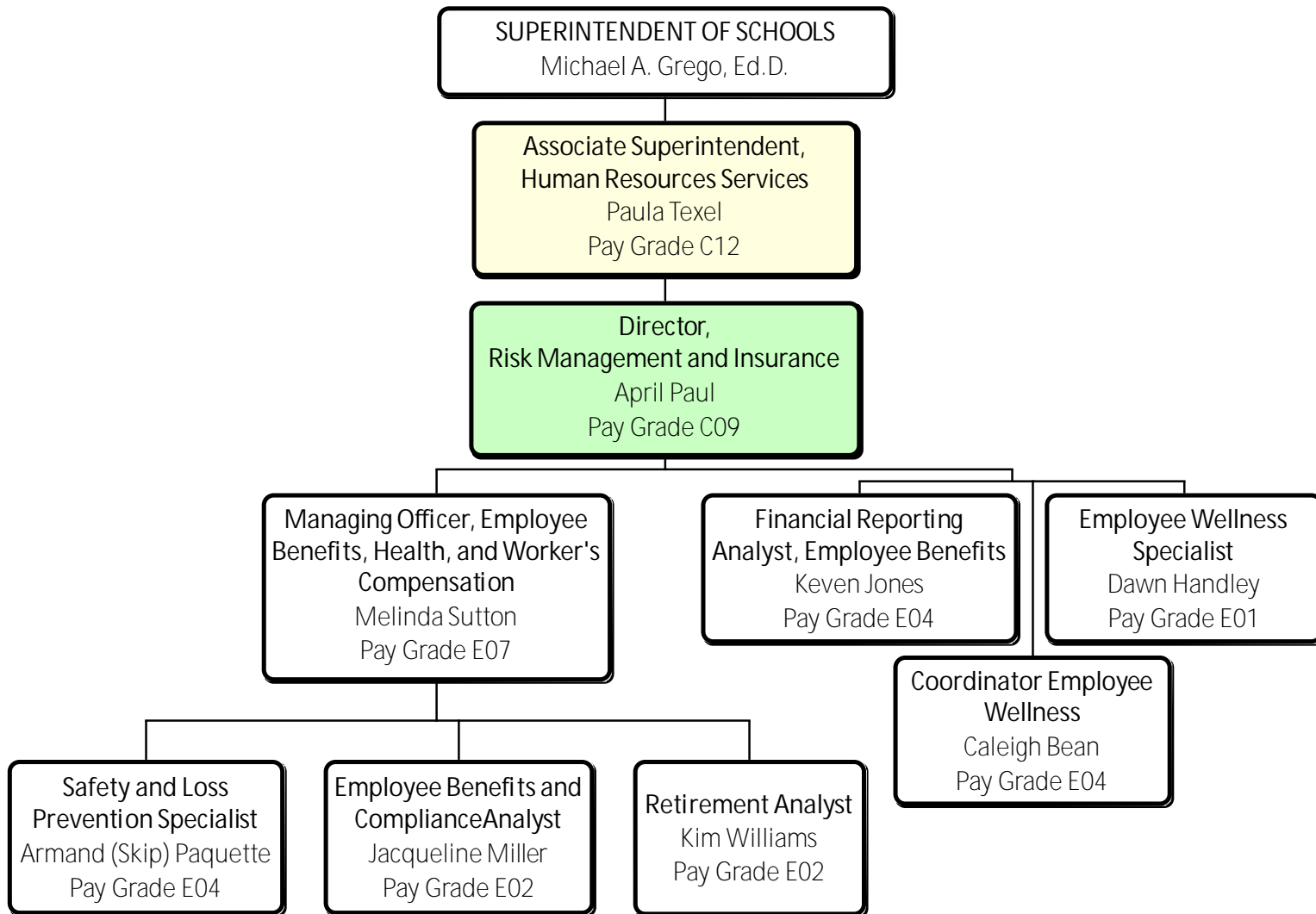


# Human Resources Services



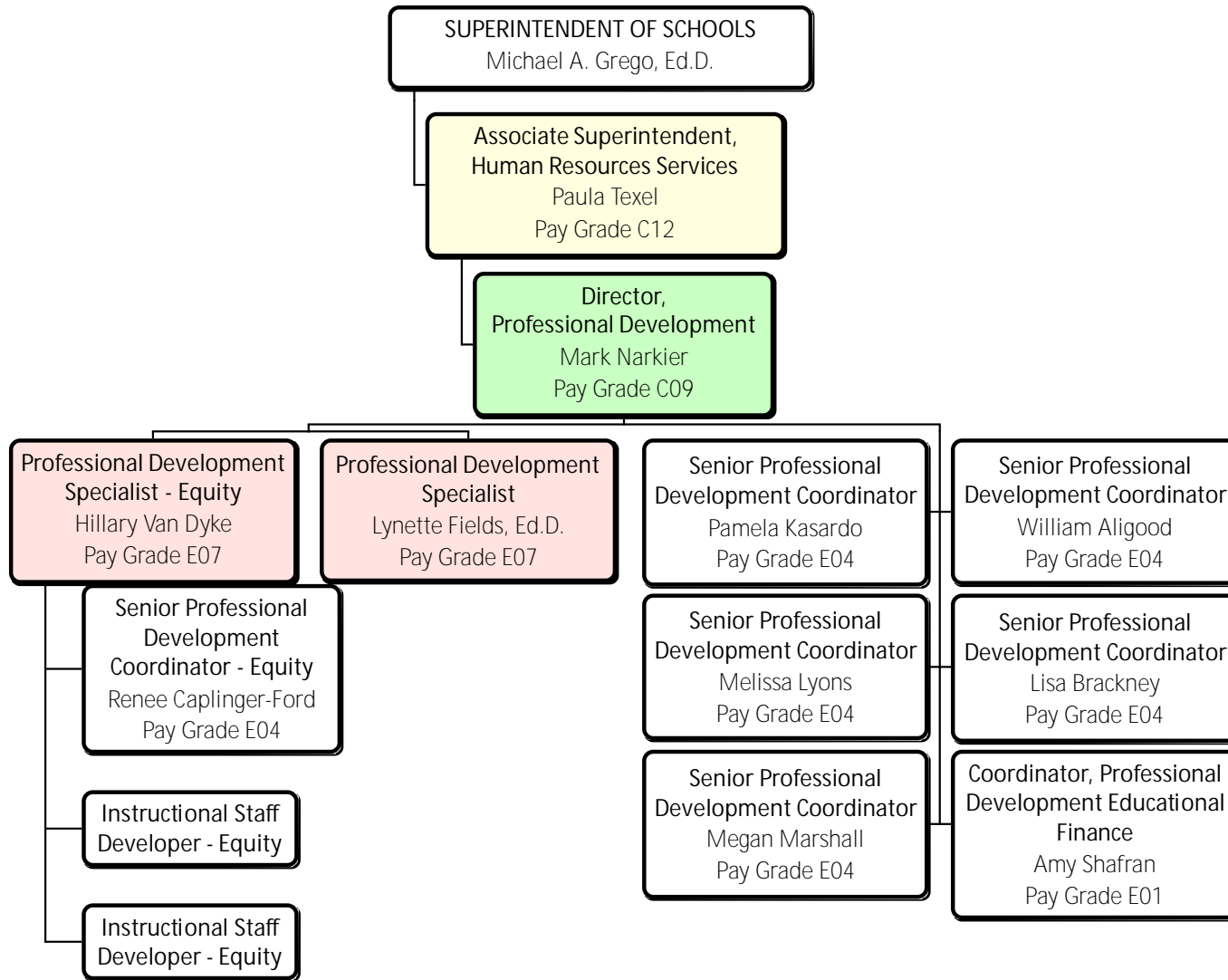


# Human Resources Services Risk Management and Insurance



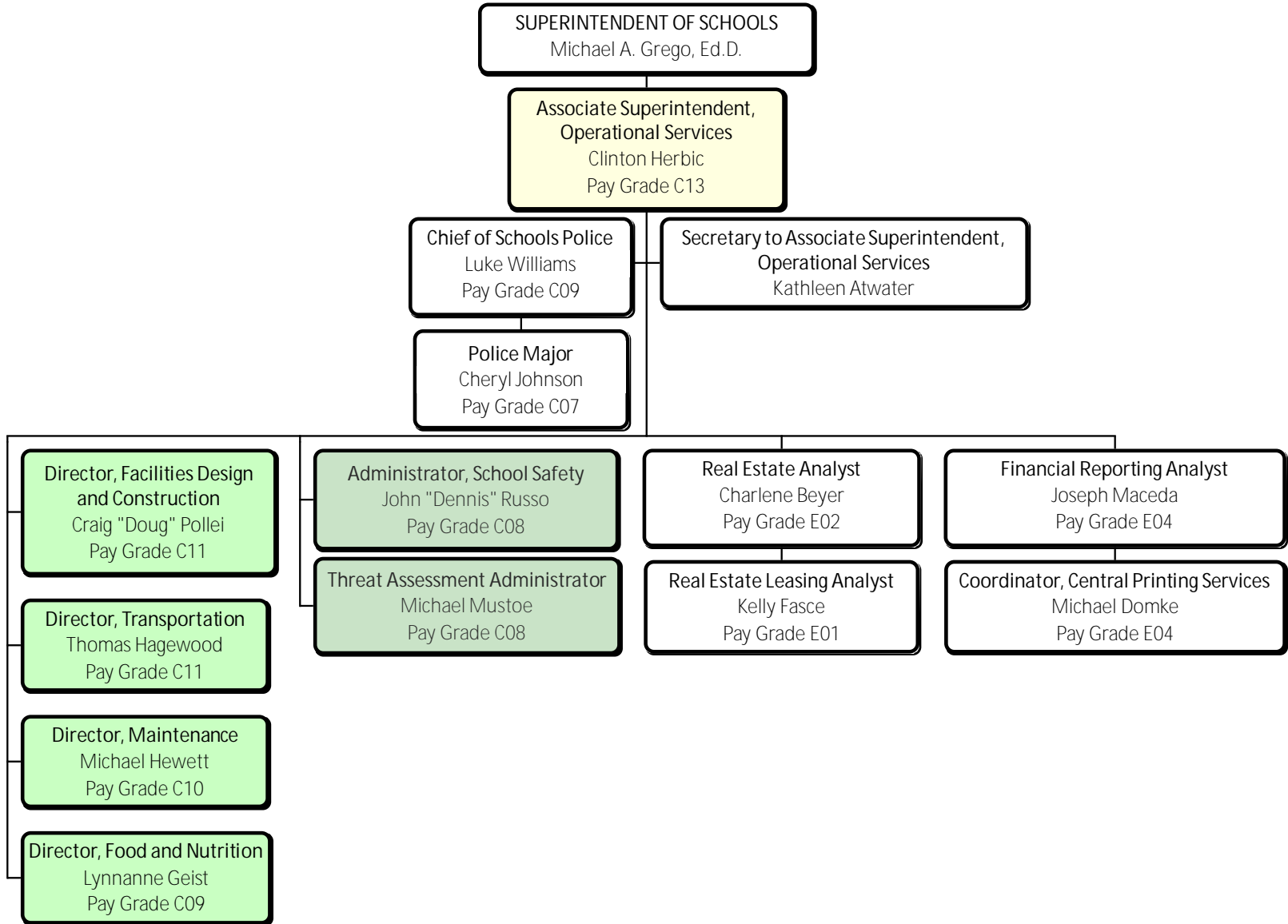


# Human Resources Services Professional Development



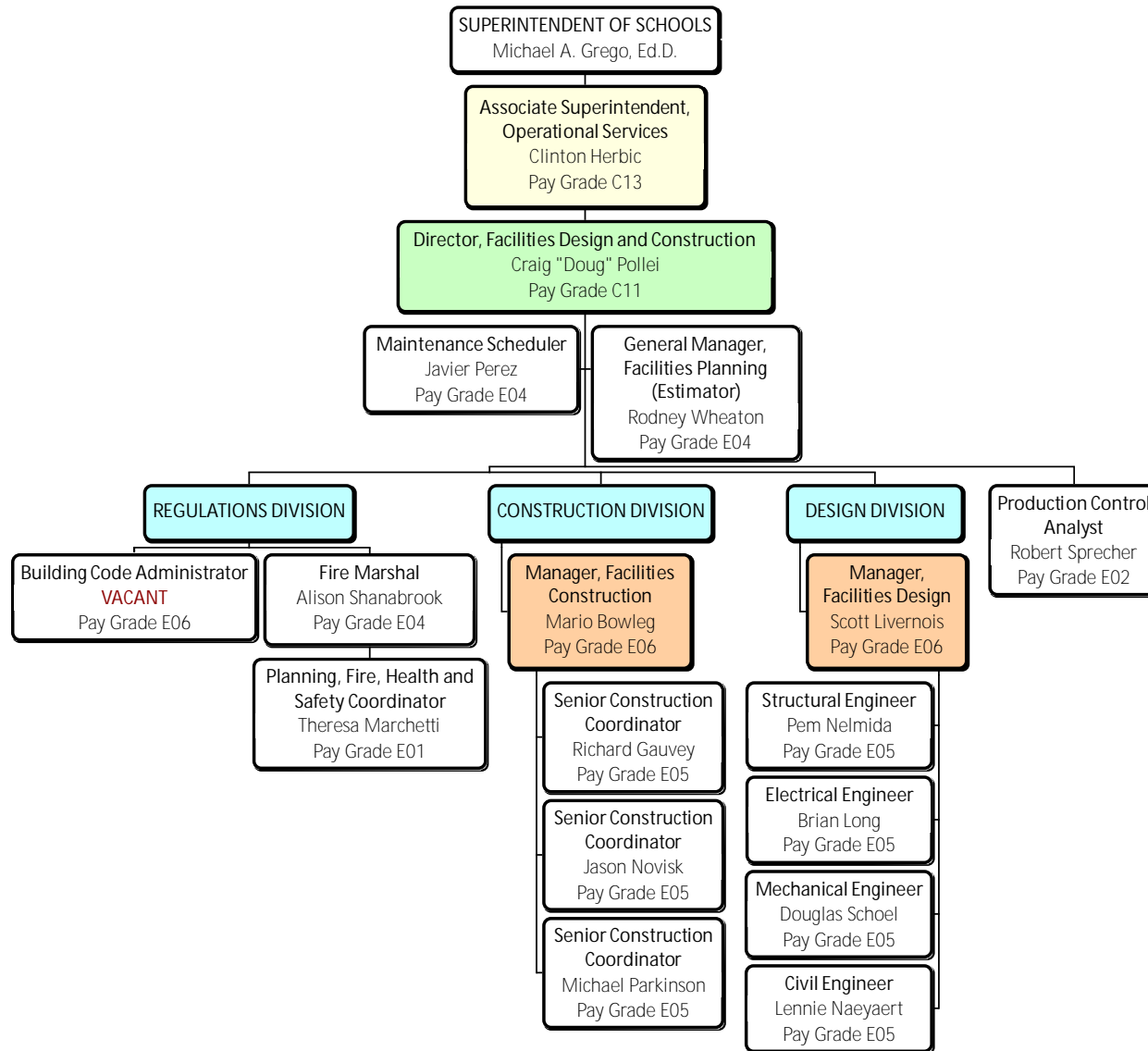


# Operational Services





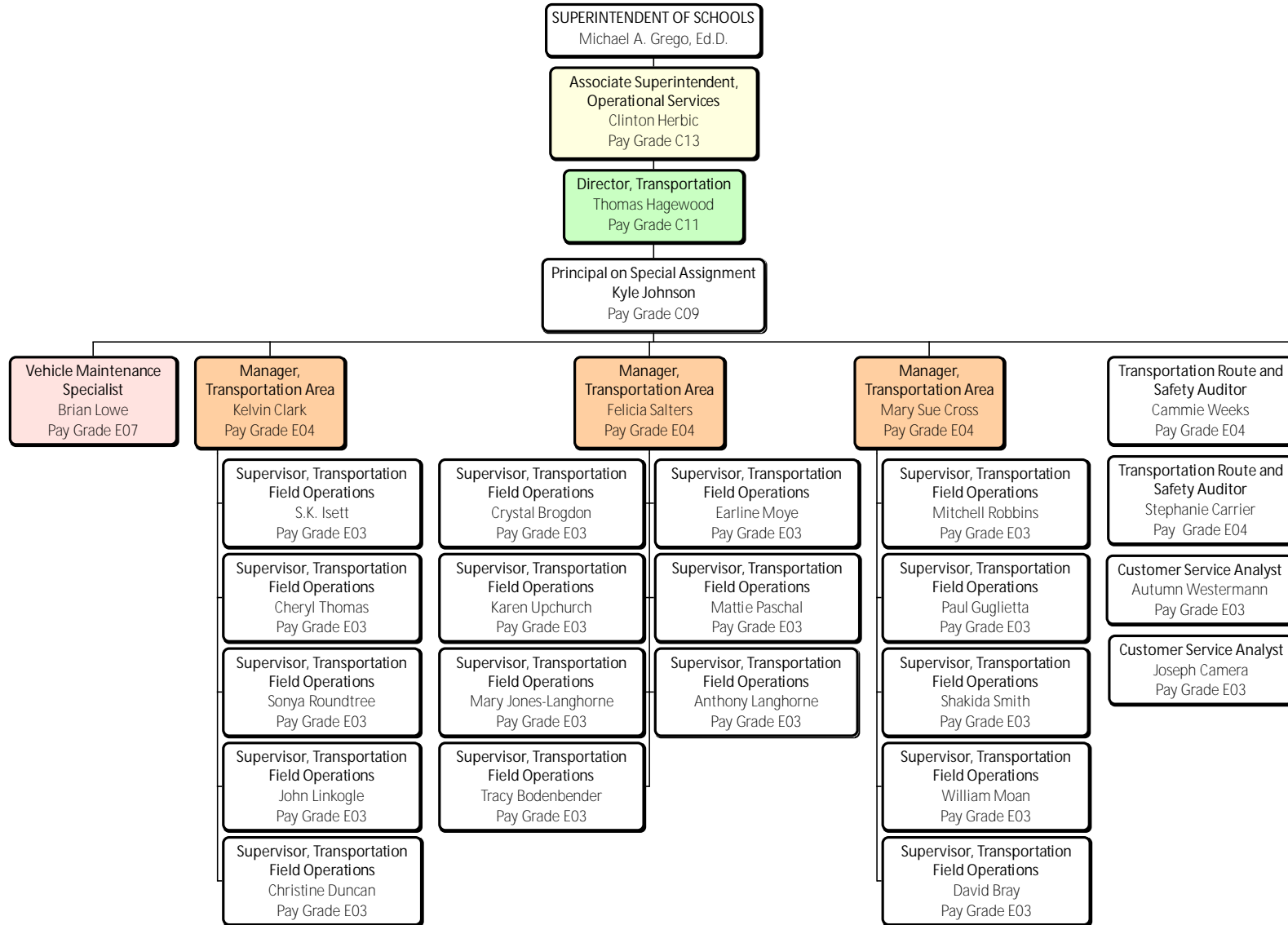
# Operational Services Facilities Design and Construction





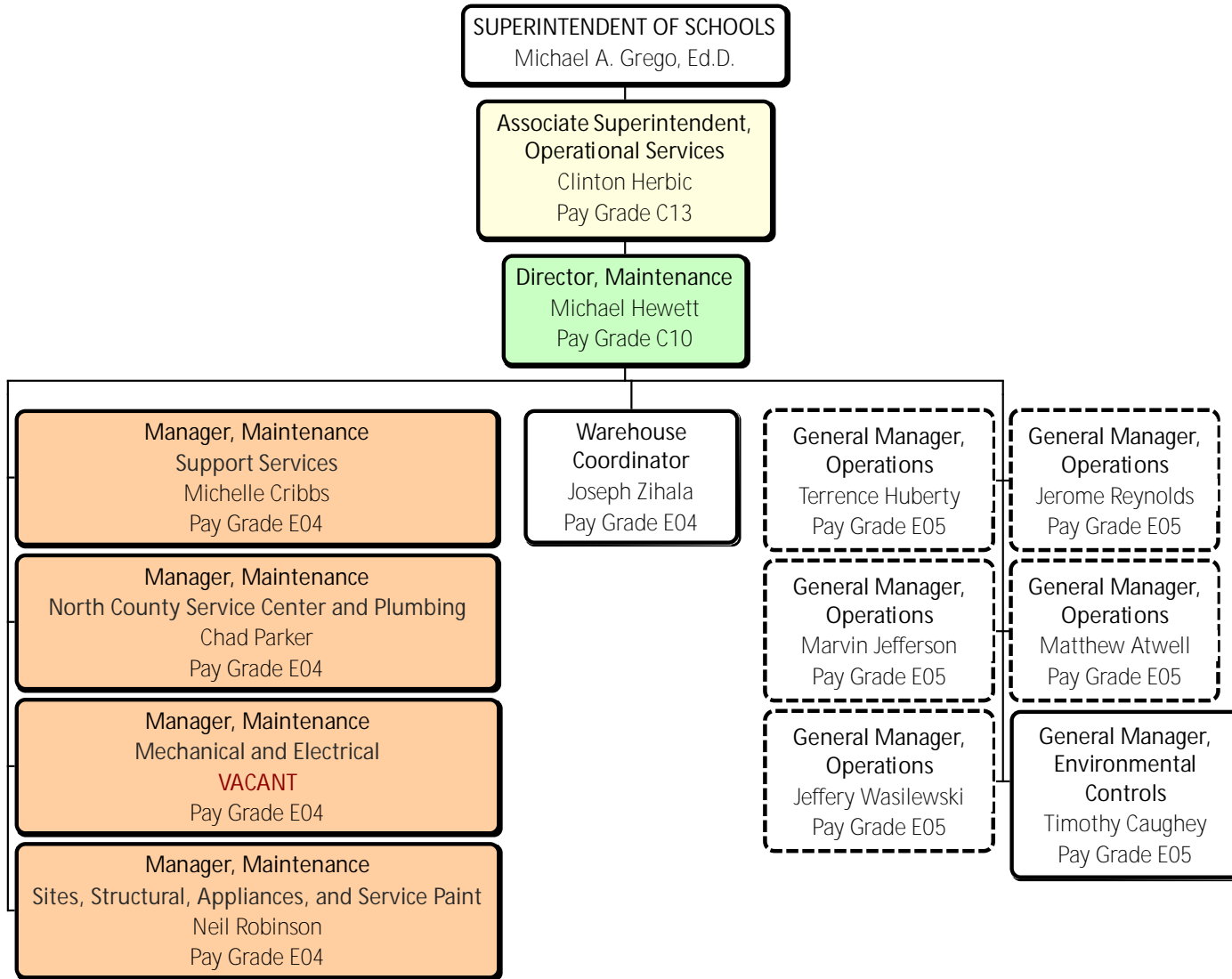


# Operational Services Transportation



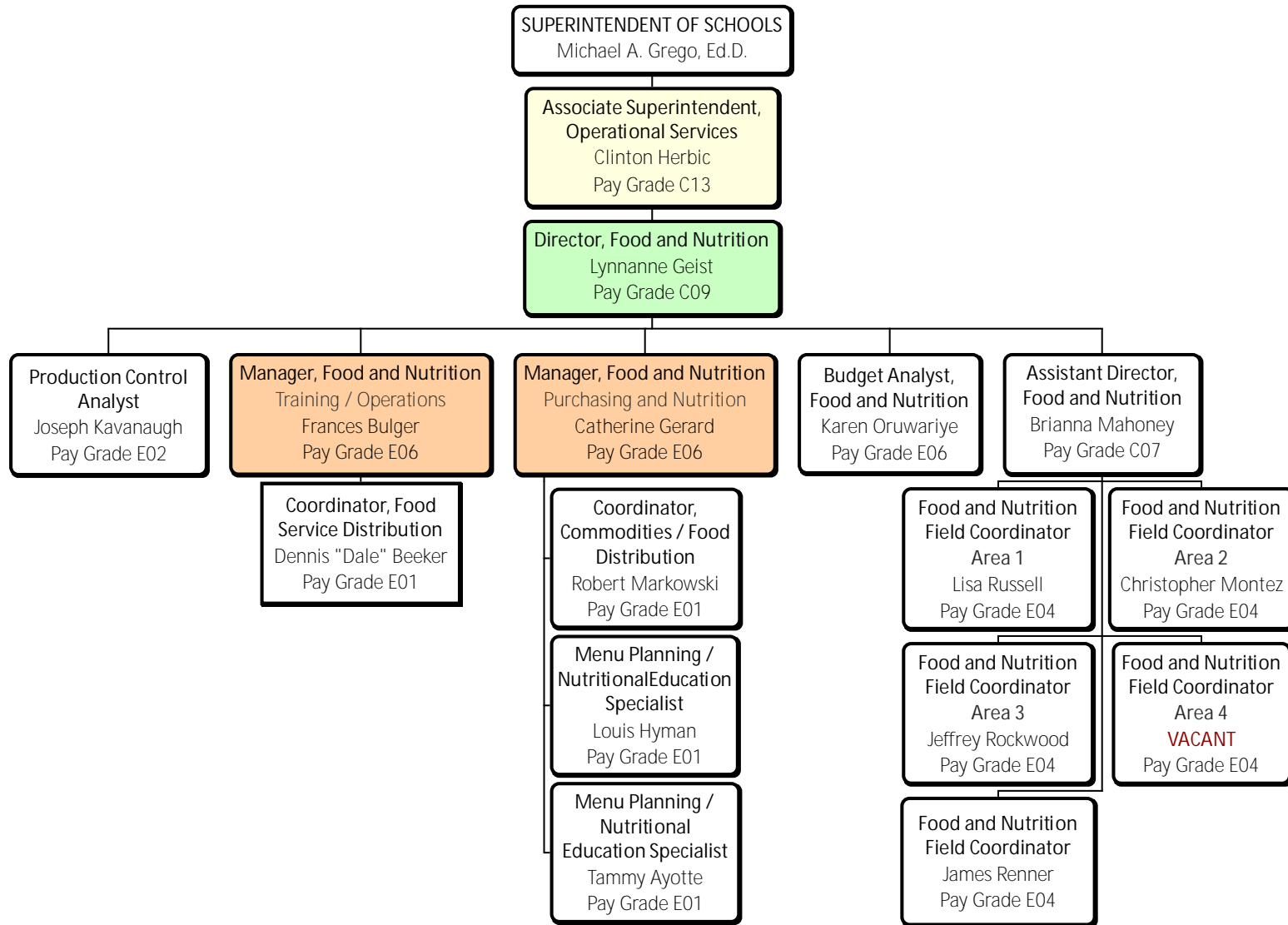


# Operational Services Maintenance



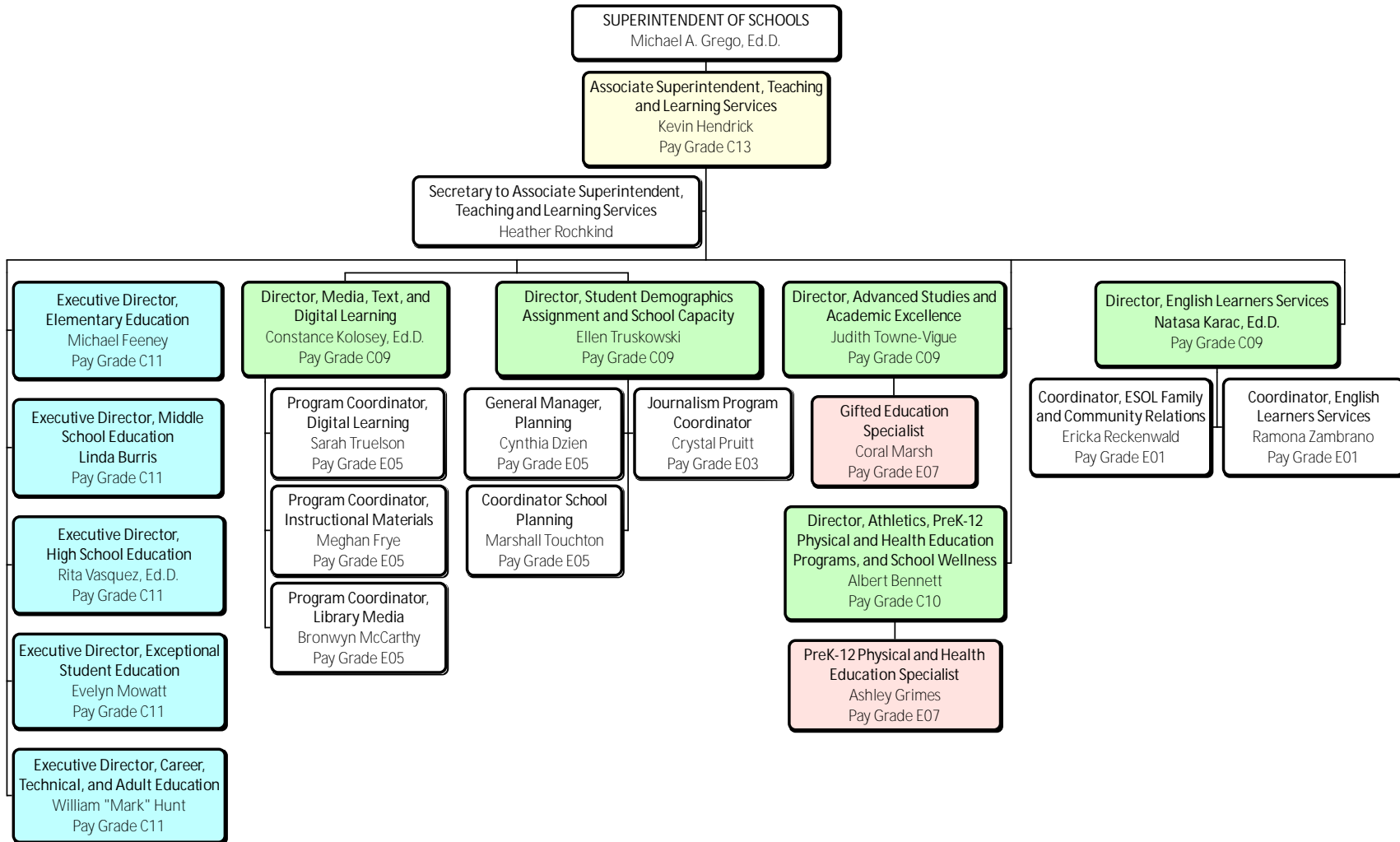


# Operational Services Food and Nutrition



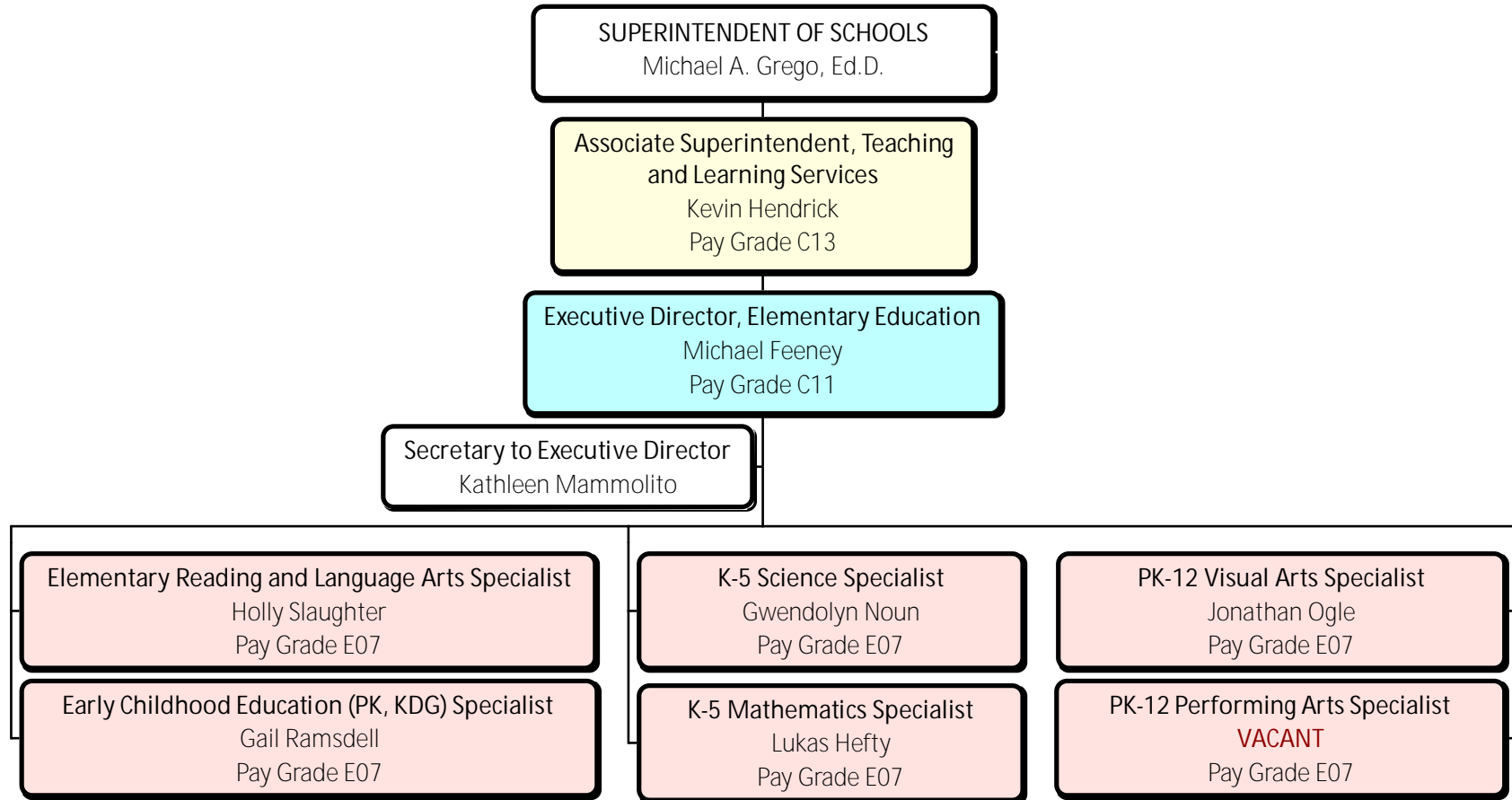


# Teaching and Learning Services



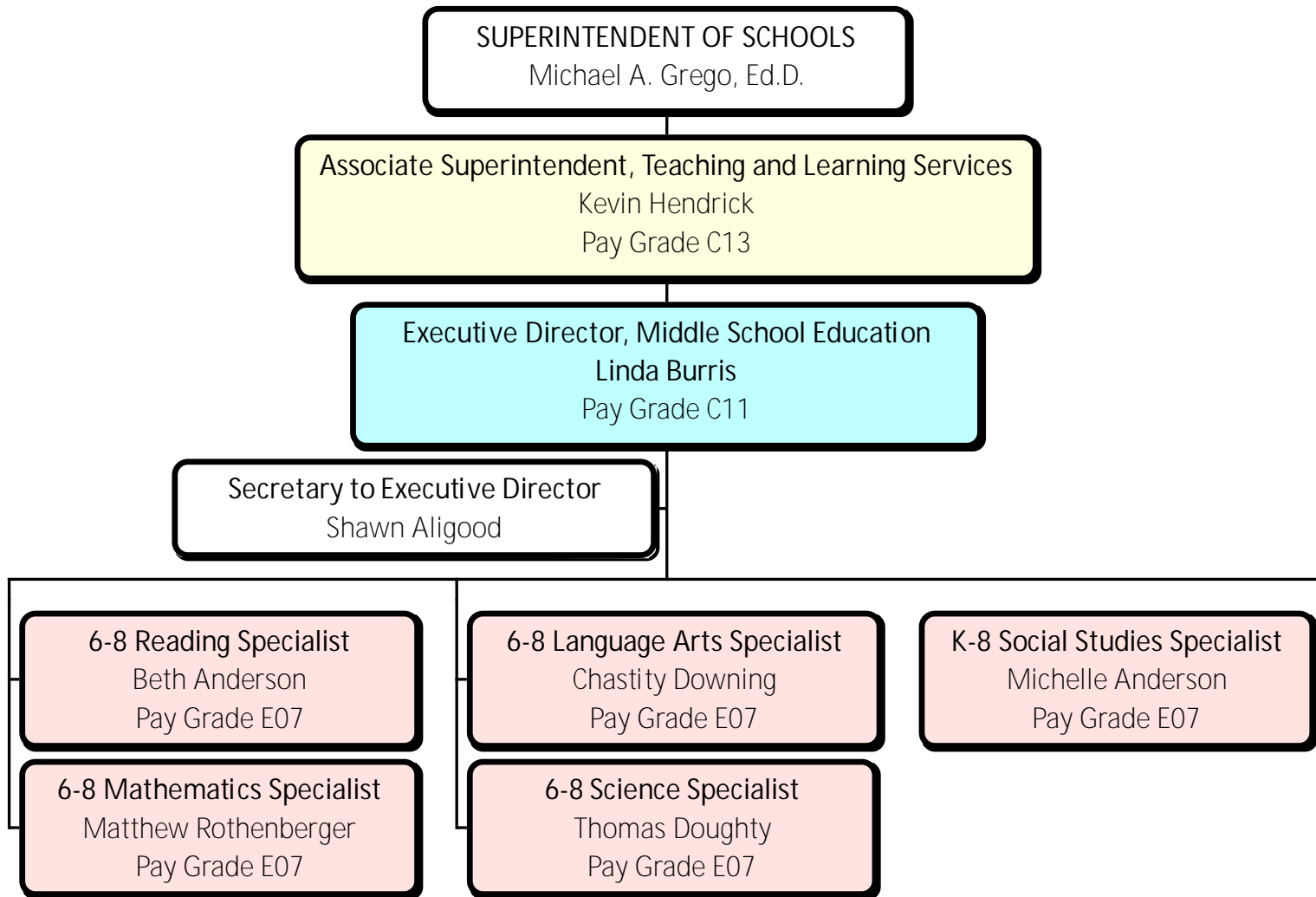


# Teaching and Learning Services Elementary Education



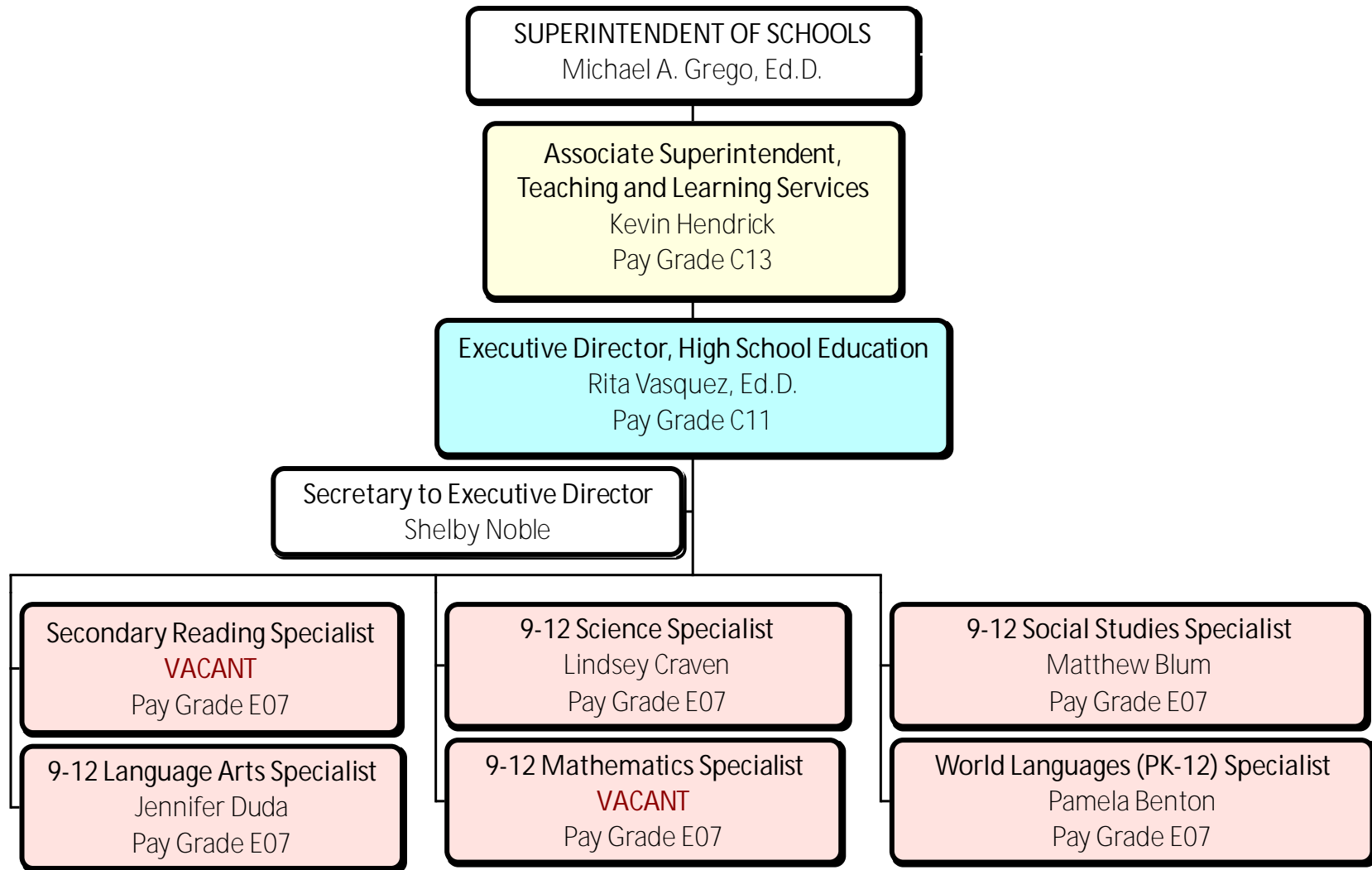


# Teaching and Learning Services Middle School Education



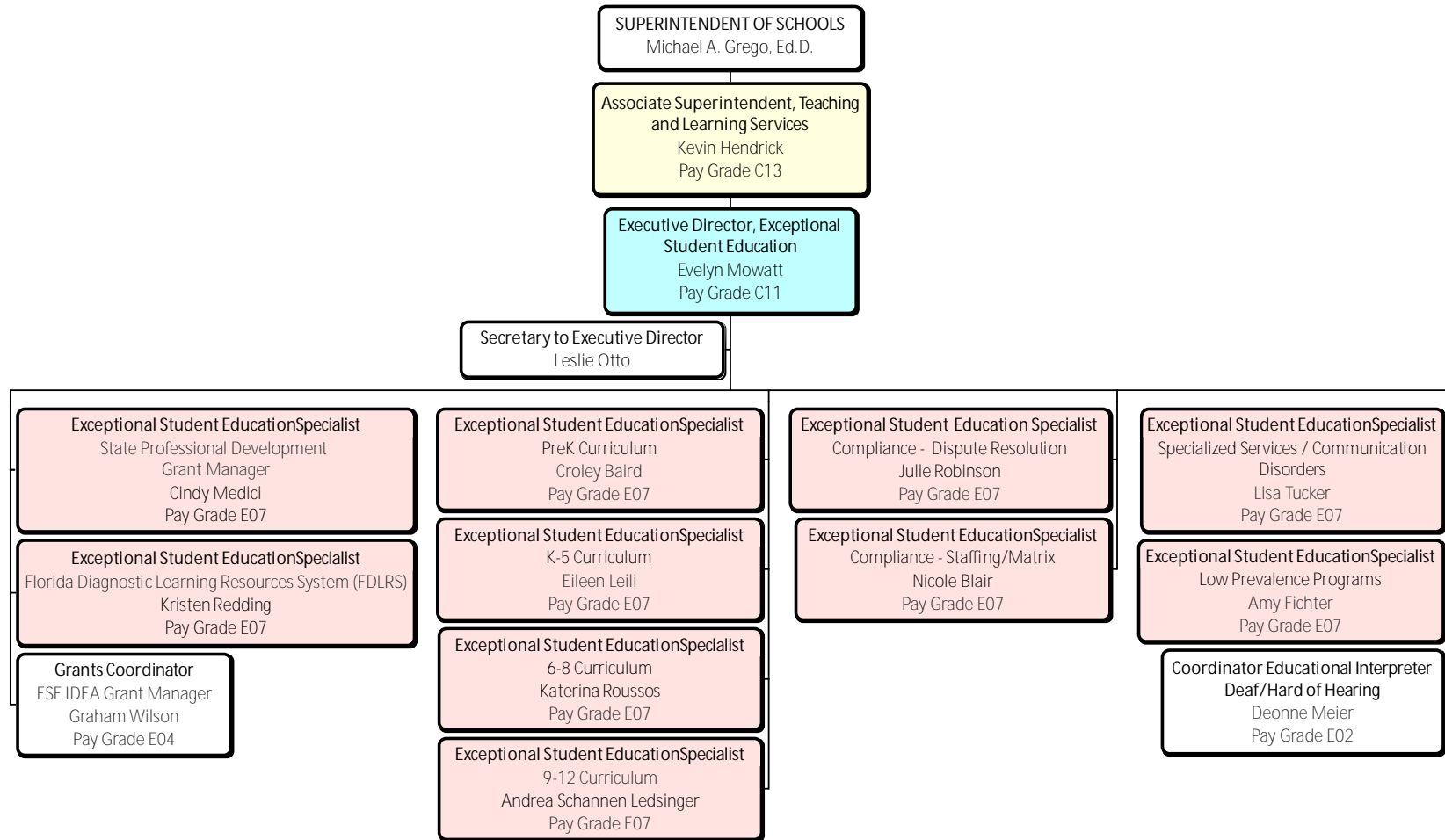


# Teaching and Learning Services High School Education





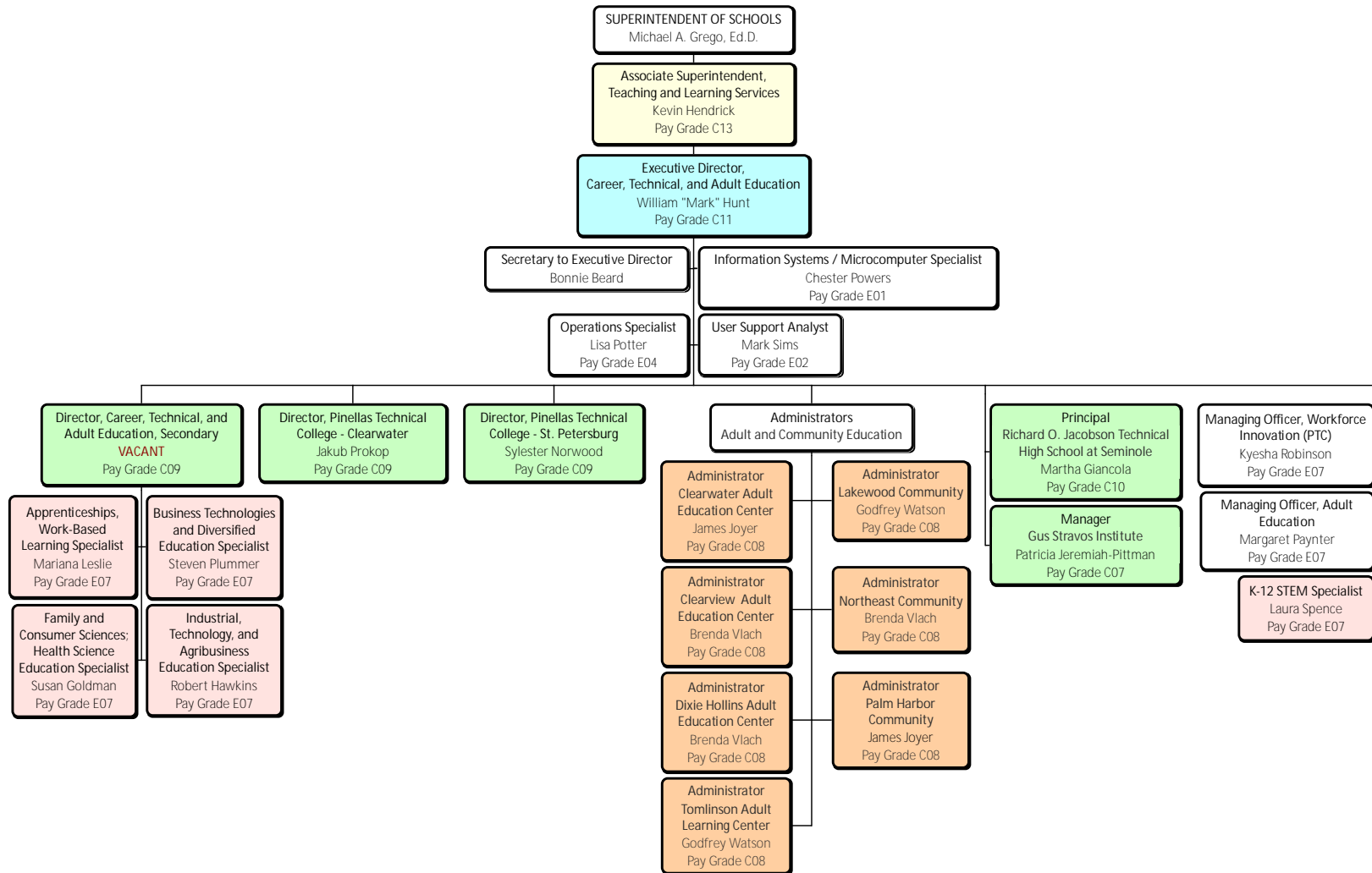
# Teaching and Learning Services Exceptional Student Education





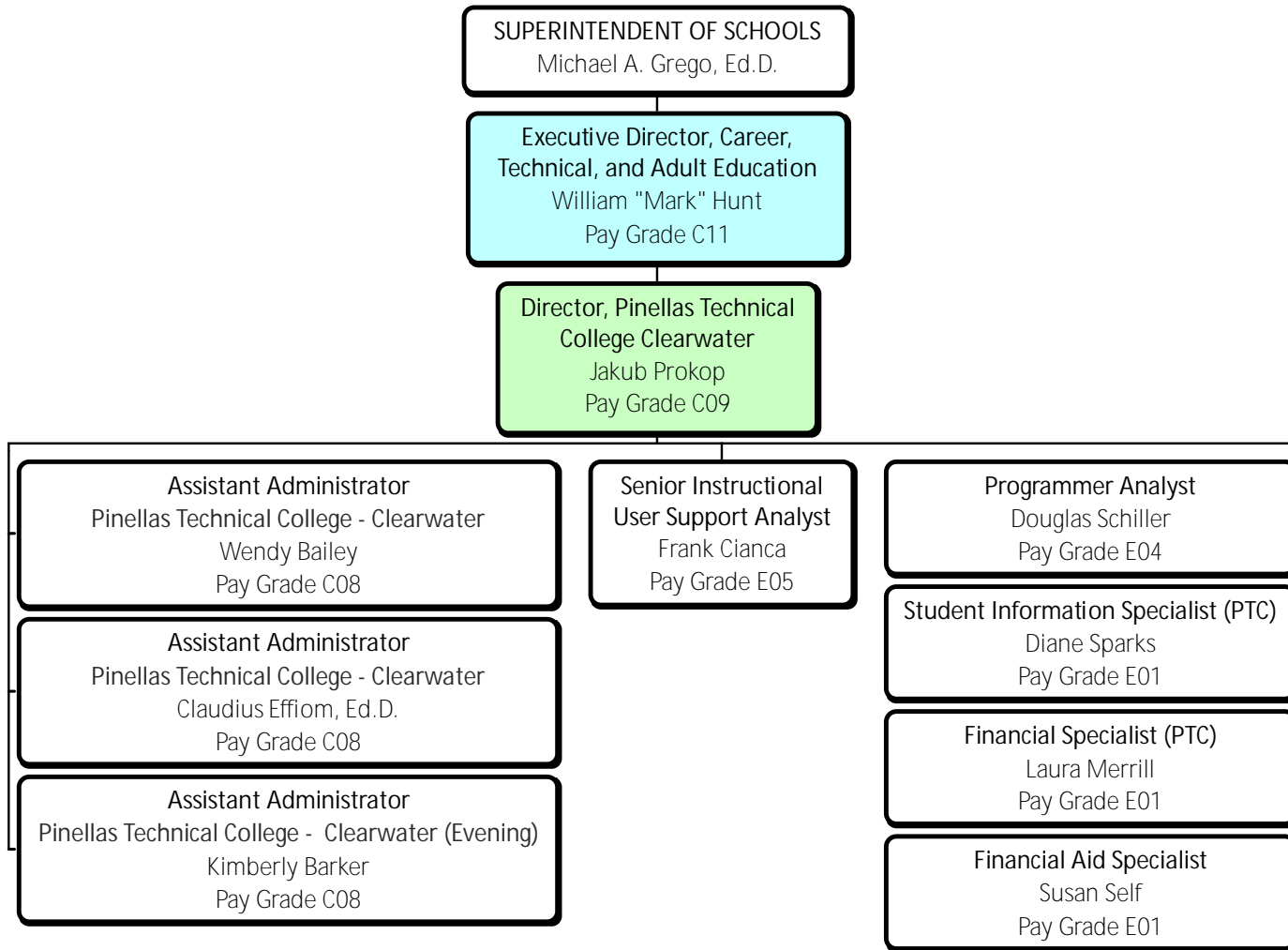


# Teaching and Learning Services Career, Technical, and Adult Education



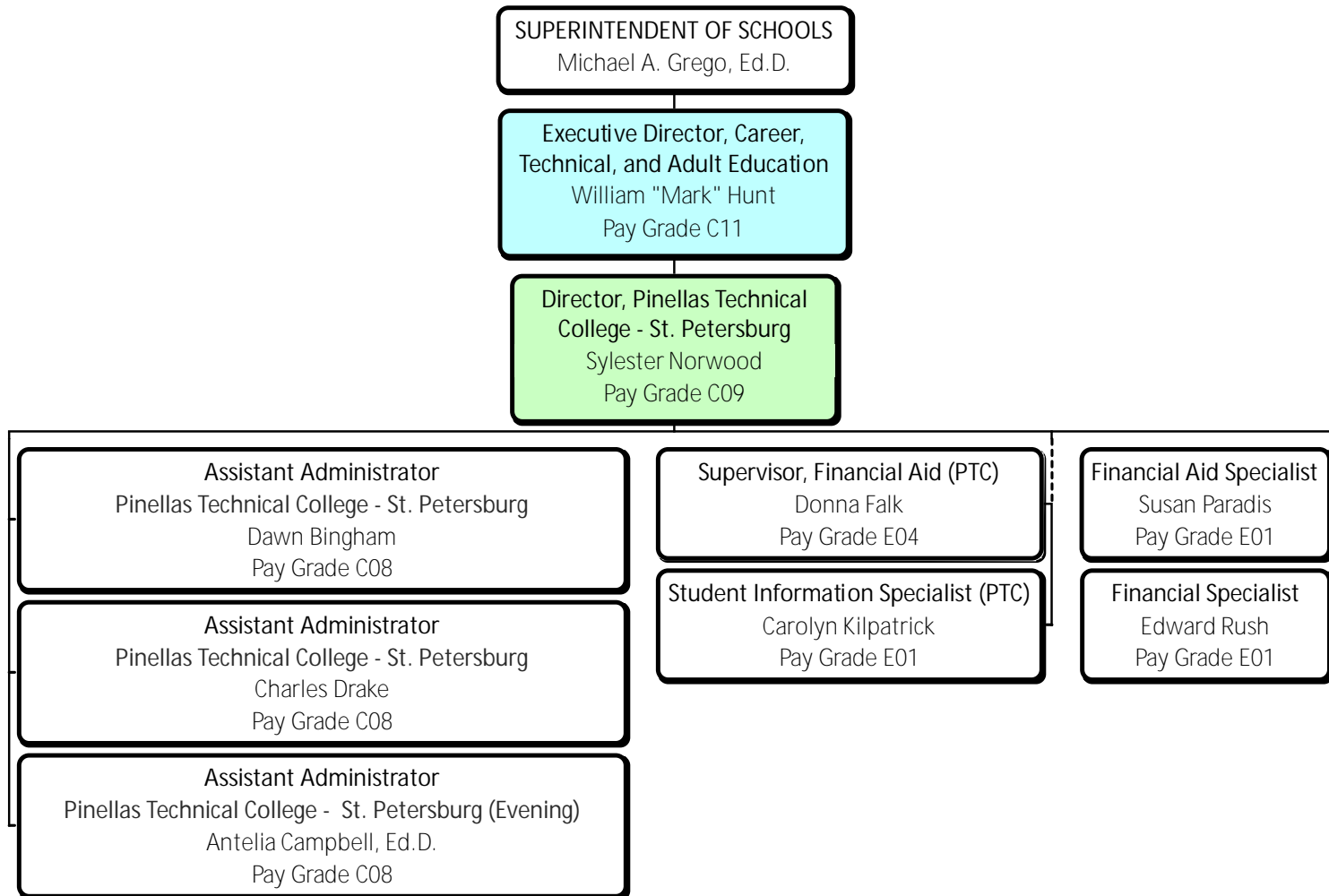


# Teaching and Learning Services Career, Technical and Adult Education Pinellas Technical College - Clearwater Campus



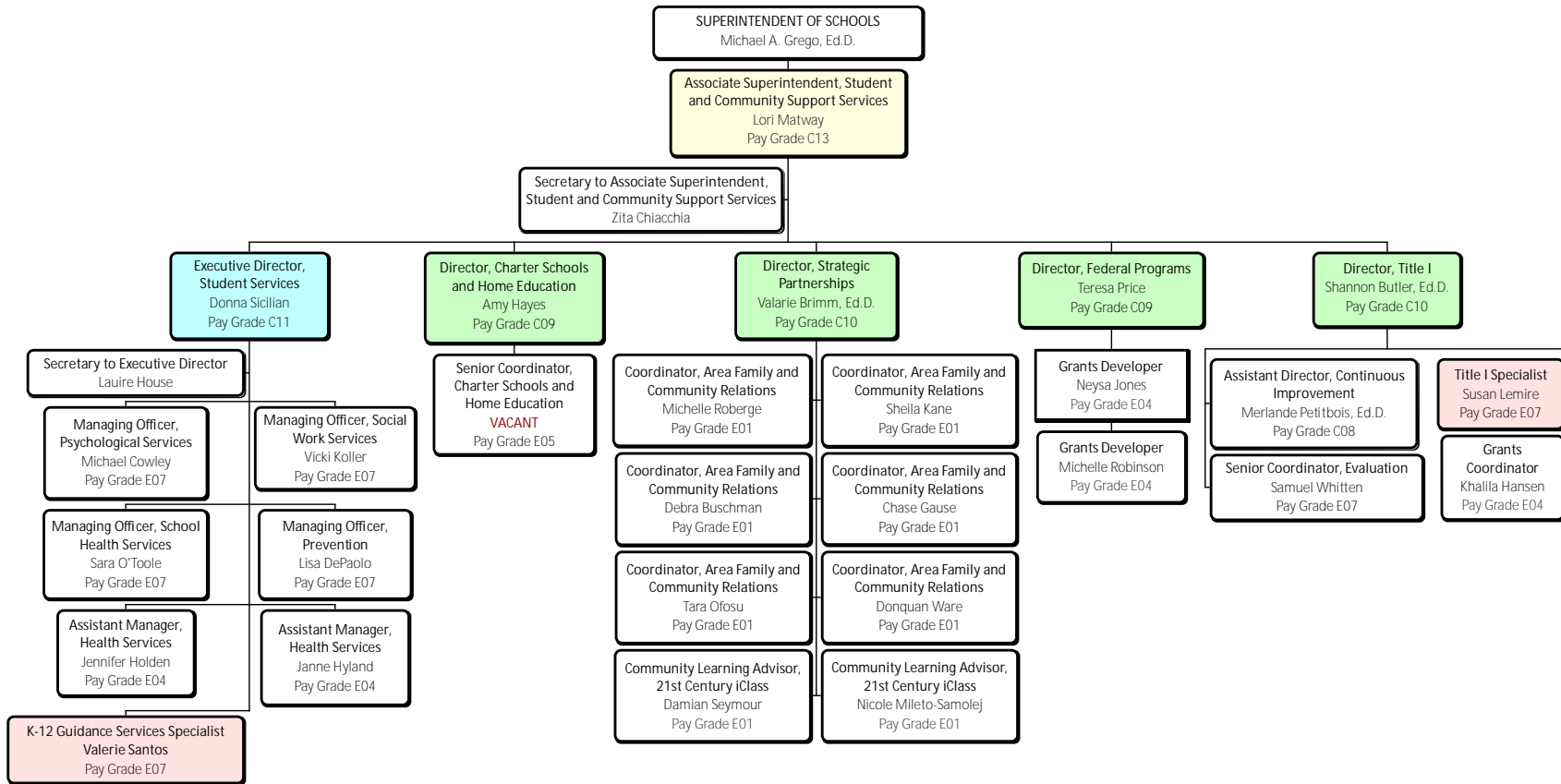


# Teaching and Learning Services Career, Technical and Adult Education Pinellas Technical College - St. Petersburg Campus



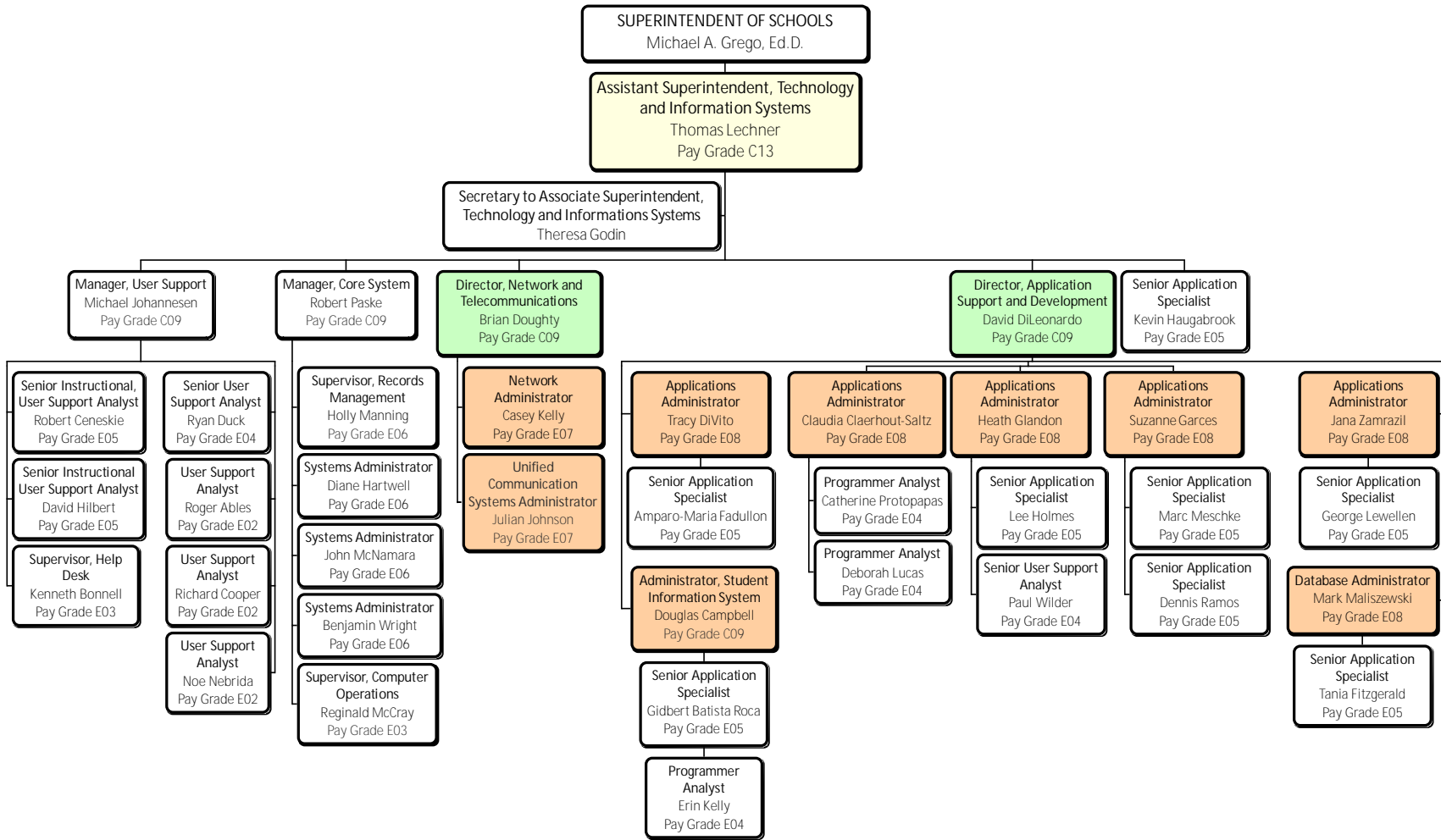


# Student and Community Support Services



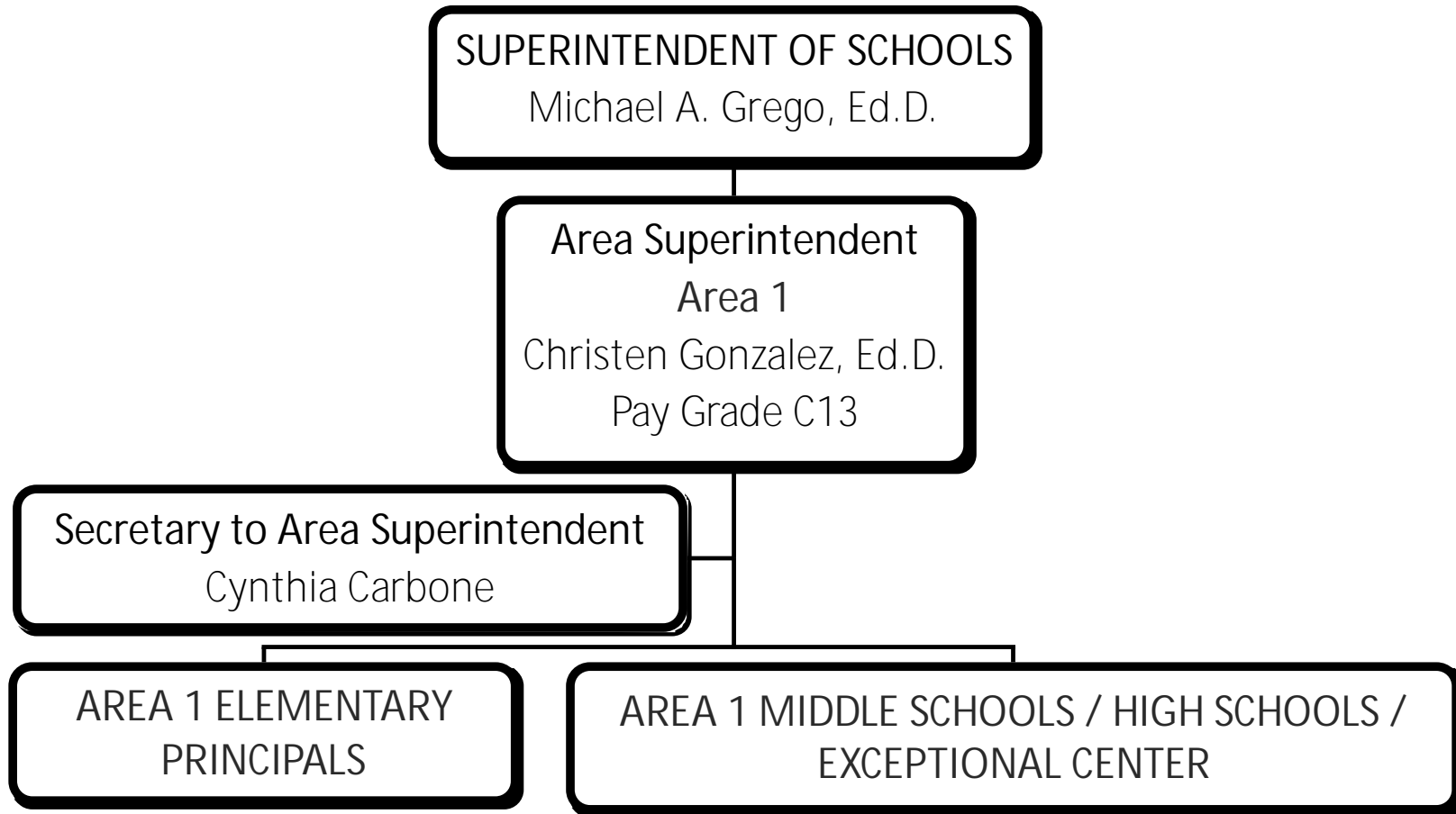


# Technology and Information Systems



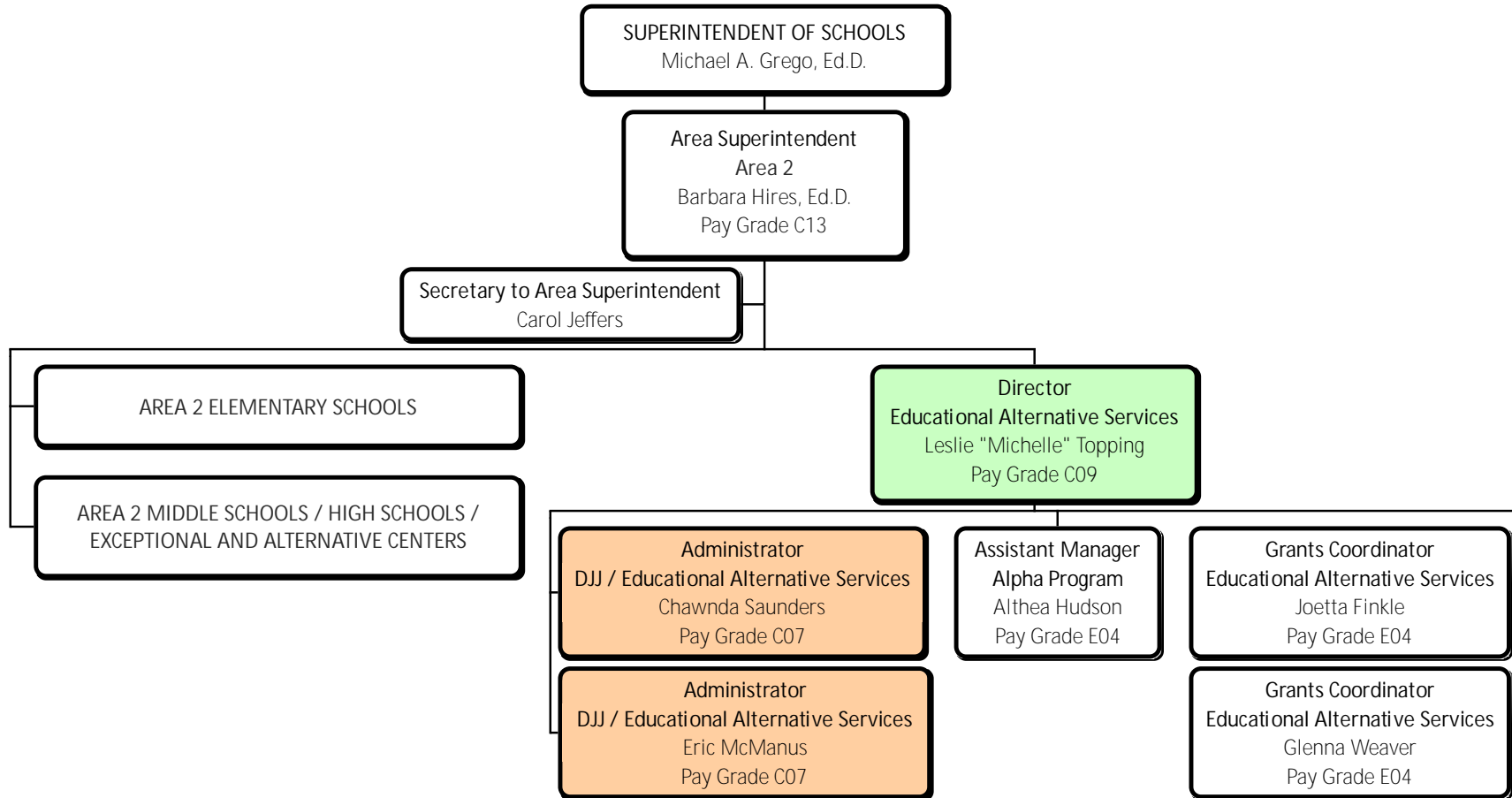


# Area 1 Administrators



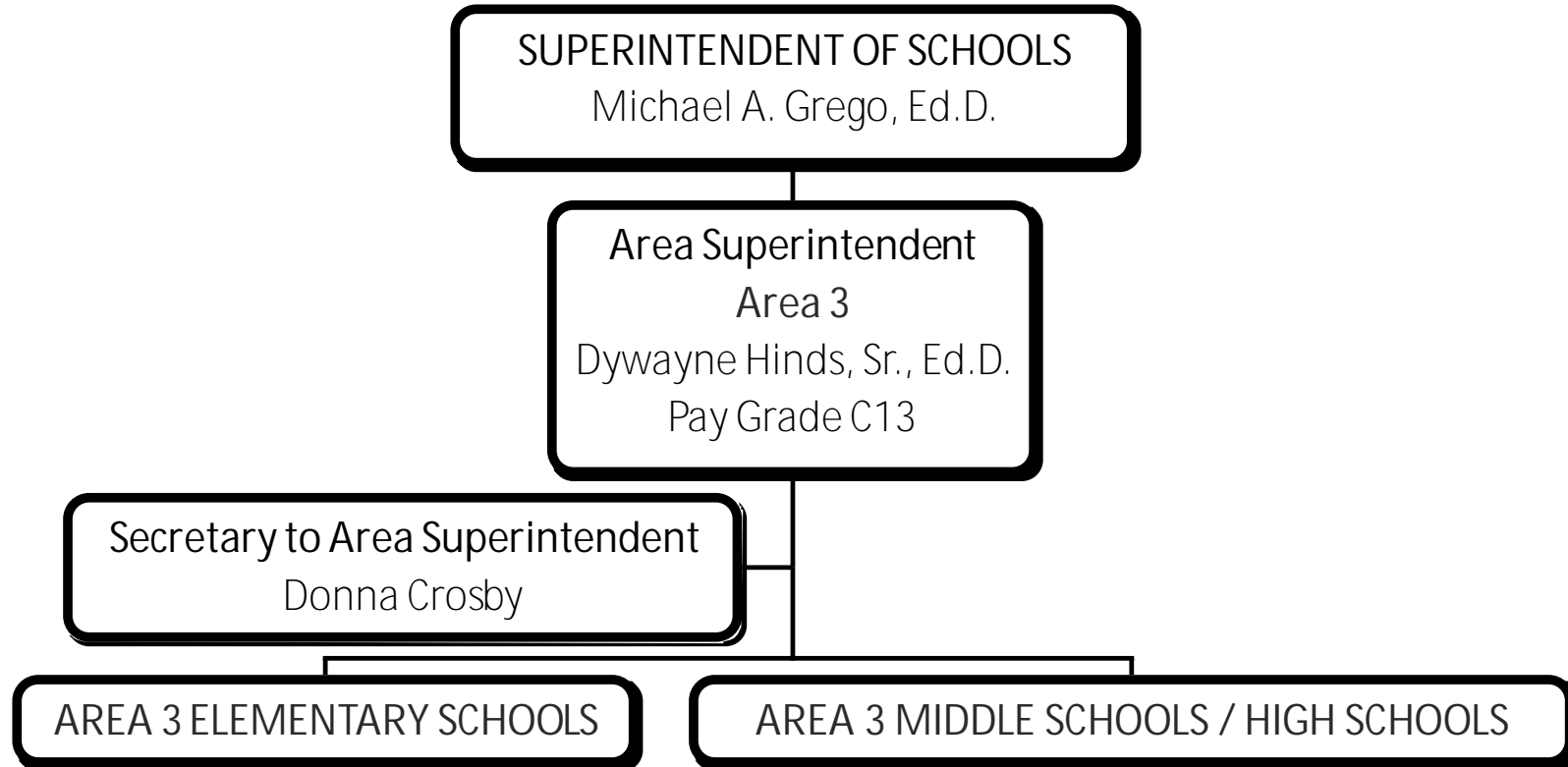


# Area 2 Administrators





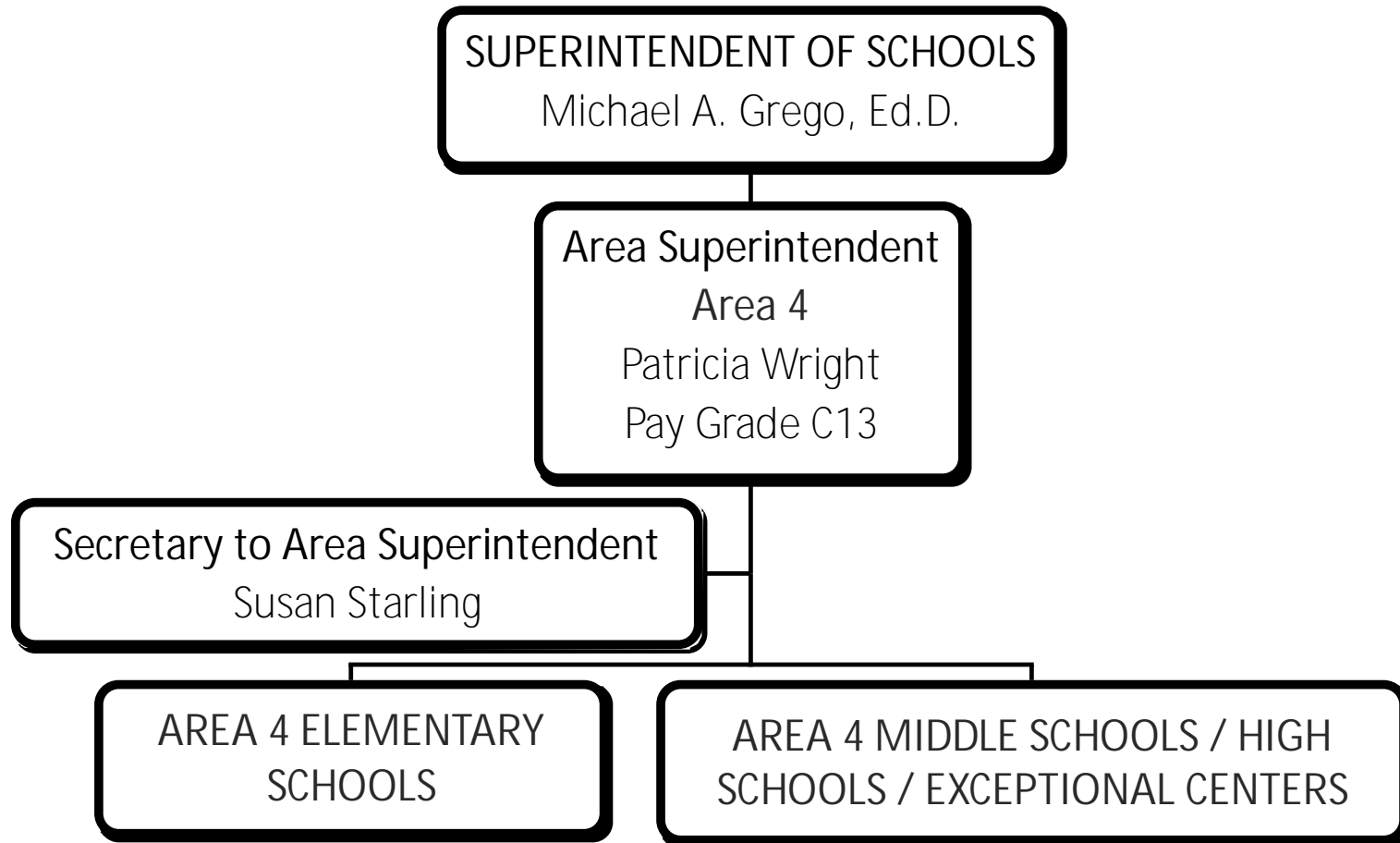
# Area 3 Administrators







# Area 4 Administrators





# Transformation Zone

